

CW MEMORY KEYER & BEACON KEYER

This CW Memory Keyer has two operational modes.

1. CW IAMBIC KEY "A" MODE
2. CW BEACON MODE

YOU CAN SWITCH OPERATIONAL MODES CHANGING THE JUMPER JMP1 POSITION AND THEN PUSH THE RESET KNOB ONCE.

Or you can just replace this jumper by the switch and place it on the front or back panel of the keyer box and be more comfortable in changing the operational modes. Do not forget to push once the **RESET** knob.

INITIALLY THE JUMPER JMP1 IS SET TO THE "CW IAMBIC KEY "A" MODE".

BEFORE USING THIS KEYER YOU SHOULD STORE YOUR CALL SIGN, YOUR QRA LOCATOR AND A TEXT MESSAGE IN ITS MEMORY BANKS. HOW TO DO THIS IS DESCRIBED BELOW IN THIS INSTRUCTION.

CW IAMBIC KEY "A" MODE

In this **CW IAMBIC KEY "A" MODE** you can use this Keyer just everyday working in the air. Also it allows you to send the **AUTO CQ** call or stored in its **Memory Bank THREE** message.

To activate **AUTO CQ** function push momentarily the **SELECT** knob. The Keyer would send this message:

CQ CQ DE (call sign) (call sign) K - then 5 sec pause and it repeats again until you click the **DOT** of your key or push the **RESET** knob momentarily.

To activate **Sending Message** function push and hold for **more than 1 sec** the **SELECT** knob. The Keyer would send **ONCE** a message that was stored in the **Memory Bank THREE**. You can stop it by clicking the **DOT** or push the **RESET** knob momentarily.

This CW Keyer has THREE Memory Banks.

1. **Memory Bank ONE** should contain the **Call Sign** only.
2. **Memory Bank TWO** should contain the **QRA Locator** only.
3. **Memory Bank THREE** should contain the other text message you can use then pushing the **SELECT** knob. It might be for example the whole QSO text, your QTH or just the RST report 599 or something else of your choice.

Probably STORING MESSAGES process would take some time and need some training. I know this because even me could not do this without some training :) Finally when you get it done the Keyer works great! I tried to describe it as simple as possible and that is what I got..

STORING MESSAGES IN THE BANKS OF MEMORY PROCEDURE.

- 1. Push and hold about 1 sec the SELECT and RESET knobs simultaneously.**
- 2. Unhold RESET knob first and then unhold the SELECT knob.**
- 3. Now you got an entry in the PROGRAM mode and should select the Memory Bank Number you want to store the message in.**
- 4. To select Memory Bank Number use the CW Key connected to the Keyer pushing the DASHES and choosing particular quantity of dashes you hear from the buzzer. ONE dash is the Memory Bank ONE, TWO dashes is the Memory Bank TWO and THREE dashes is the Memory Bank THREE. If you need the Memory Bank One then stop pushing the dashes right after the first DASH. If you need the Memory Bank TWO then stop pushing the dashes right after the second DASH. If you need the Memory Bank THREE then stop pushing the dashes right after the third DASH.**

TO NOTE PLEASE: Storing process is NOT working in IAMBIC keying style. You should use a simple keying style while storing the messages.

- 5. Right after a stop you get an access into the memory bank. In about half of a second after a stop you can store your message keying a text using Morse code by the key. Do not wait too long or a time of storing process is expired and you would need to do all things described in this instruction again. Then after keying your message to stop and do not push the key or knobs but wait until you hear a 5 sec long beep sound from a buzzer. It means that your message was stored. As a confirmation of this right after this 5 sec long beep you should hear your stored message from the buzzer. If the message was incorrect or you stored it with a mistake then go right up to the p.1 of this instruction and do all things again.**

Now, I guess you have the **Memory Bank ONE** recorded and got your call sign stored correct there. You can check it by momentarily clicking the **SELECT** knob. You should hear the **AUTO CQ** message with your call sign. It would send **AUTO CQ** message with an interval of **5 sec**. You can stop it clicking momentarily on the **DOT** of your key or just pushing the **RESET** knob. You can use this **AUTO CQ** function in your operation while sending the CQ call.

Then do the same storing procedure again and store your QRA Locator in the Memory Bank TWO.

And the last is to store your message in **Memory Bank THREE**. It is the most largest memory bank so after keying your message there you should wait more time while a storing time is expired and a message was stored.

To note please: Do not do a long pause between sending words or letters. It might cause you exit of program mode. And in any case you should wait a long beep from a buzzer as I described it in **p.5** of the description of memory storing procedure.

Now your Keyer is ready to work although it was ready right after you stored your call sign there.

CW BEACON MODE

The **CW BEACON MODE** is usable in the **HF** or **VHF** beacons. In this mode the Keyer is repeatedly sending the standard beacon message

"Call sign" BEACON QRA "QRA LOC" then 25 sec long Beep then 5 sec pause and it repeats again and again.

Even if you switch the power supply **OFF** and then in a time **ON** again the Keyer would start sending the beacon message while it is set in the CW Beacon Mode.

If you have any questions you can email me and ask them.

Web Store: <http://transverters-store.com/>

E-mail: ut5jcw@usa.com

Skype: **ut5jcw**



BUZZER
To note: It has a polarity.



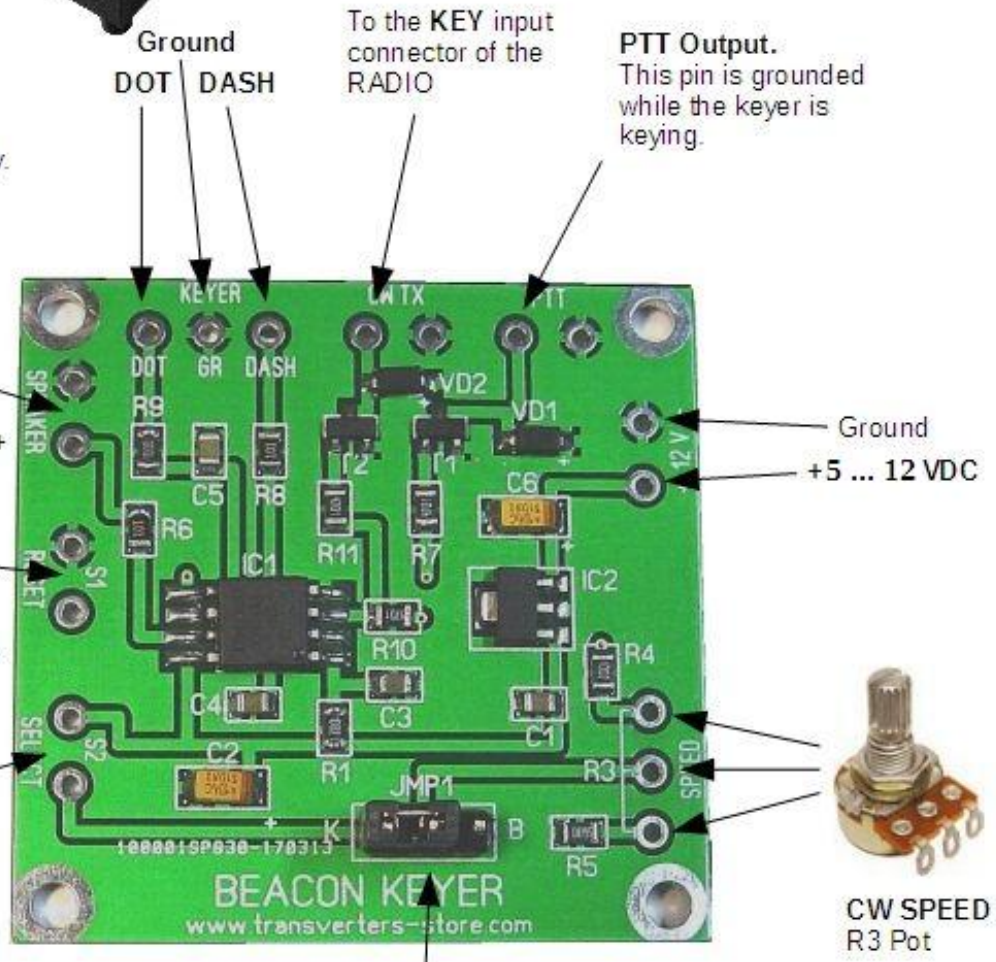
+



S1 - "RESET" Knob



S2 - "SELECT" Knob



JMP1 Jumper.
To use this switch to select operational modes of the keyer.
Read manual sheet

